

# Primo Museo Ebraico a Berlino nella Oranienburger Straße

fondato 1929, inaugurato 1933, chiuso dalla Gestapo 1938



**Stiftung (Fondazione) Neue Synagoge Berlin - Centrum Judaicum**  
nella Oranienburger Str 28/30 (inaugurato 1995)



Jakob Steinhardt  
*Der Prophet* (1913/14)

**Iniziativa „Stolpersteine“ („Pietre su cui si inciampa“)**  
dell'artista Gunter Denning; la prima pietra posta a Kreuzberg nel 1996, ora  
45.000 pietre in Germania e altri 17 paesi



# **Jüdisches Museum Berlin**

edificazione 1989-1999

inaugurazione 2001

Architetto Daniel Libeskind

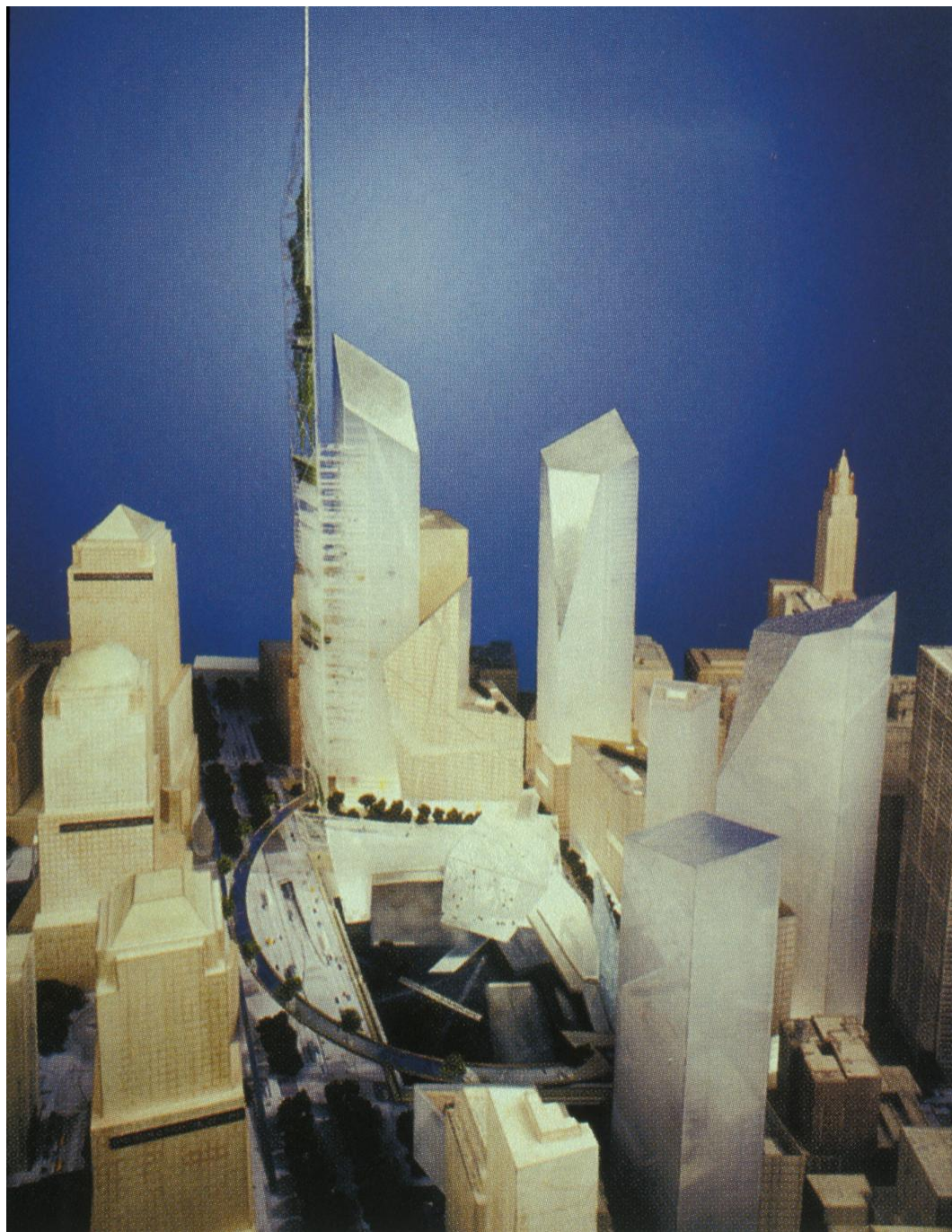
(Lodz, Polonia 1946)

# Jüdisches Museum Berlin

arch. Daniel Libeskind 1989-99; inaugurazione Sept.  
2001



**Daniel Libeskind**  
*Piano regolatore per il*  
*Ground Zero*  
**2003**





The central building is a three-story classical structure with a red-tiled mansard roof. It features a central pediment with a decorative relief. The facade is composed of several windows, with a central entrance featuring a balcony. Two red vertical banners are positioned on either side of the central entrance. The building is illuminated from below, casting a warm glow.

To the right of the main building is a modern building with a dark, metallic facade. It has a series of vertical panels and a prominent overhang on the upper floor. A few people and bicycles are visible near its base.

On the left side of the plaza, there are two black street lamps with multiple lanterns. Next to them are three orange flags on tall poles. A small white building with an arched entrance is partially visible behind the flags.

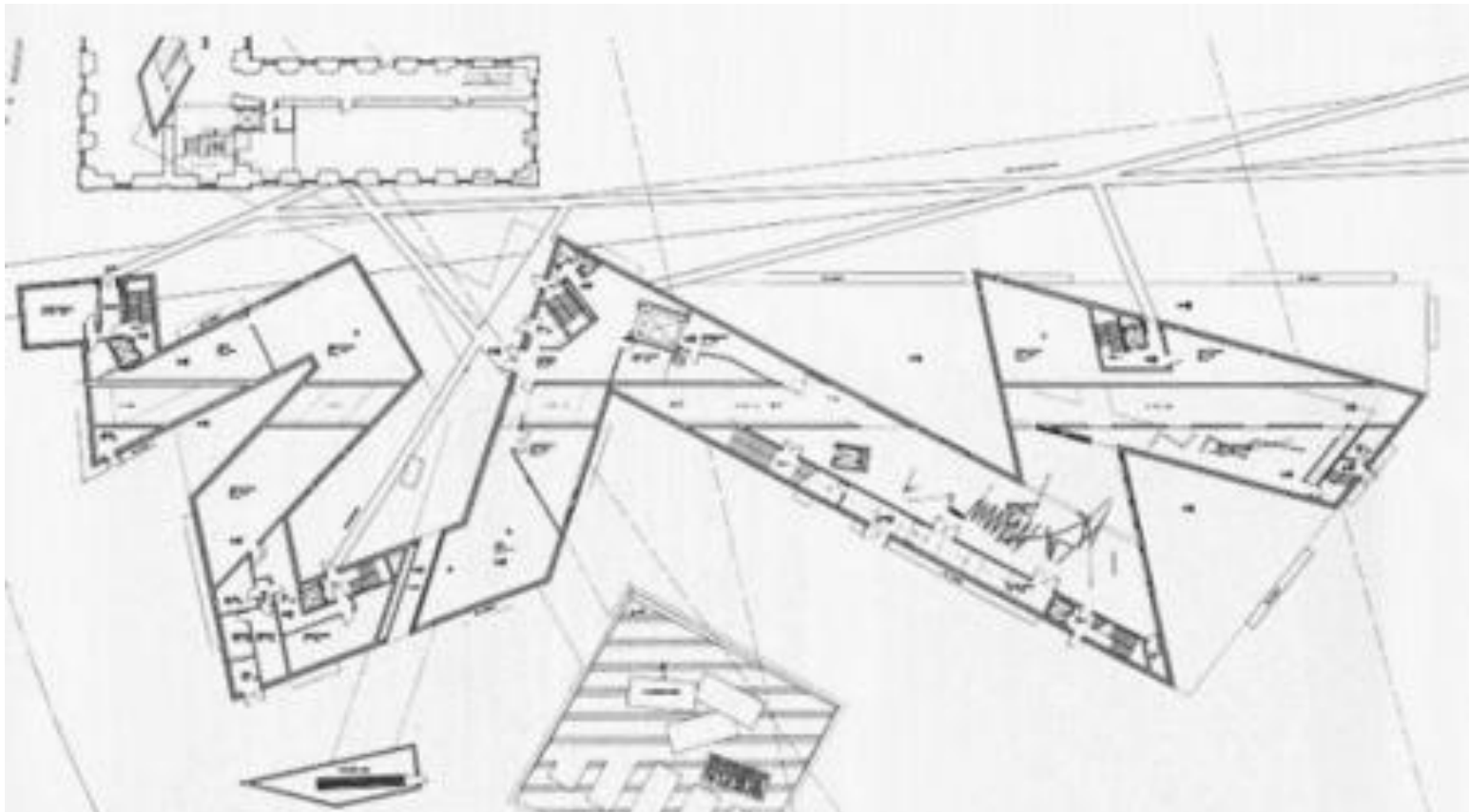
The foreground shows a dark asphalt road with white lane markings. A low, dark metal railing runs across the bottom of the frame. The sky is a clear, deep blue, indicating twilight.







# Libeskind ha battezzato il progetto del JMB “between the lines”















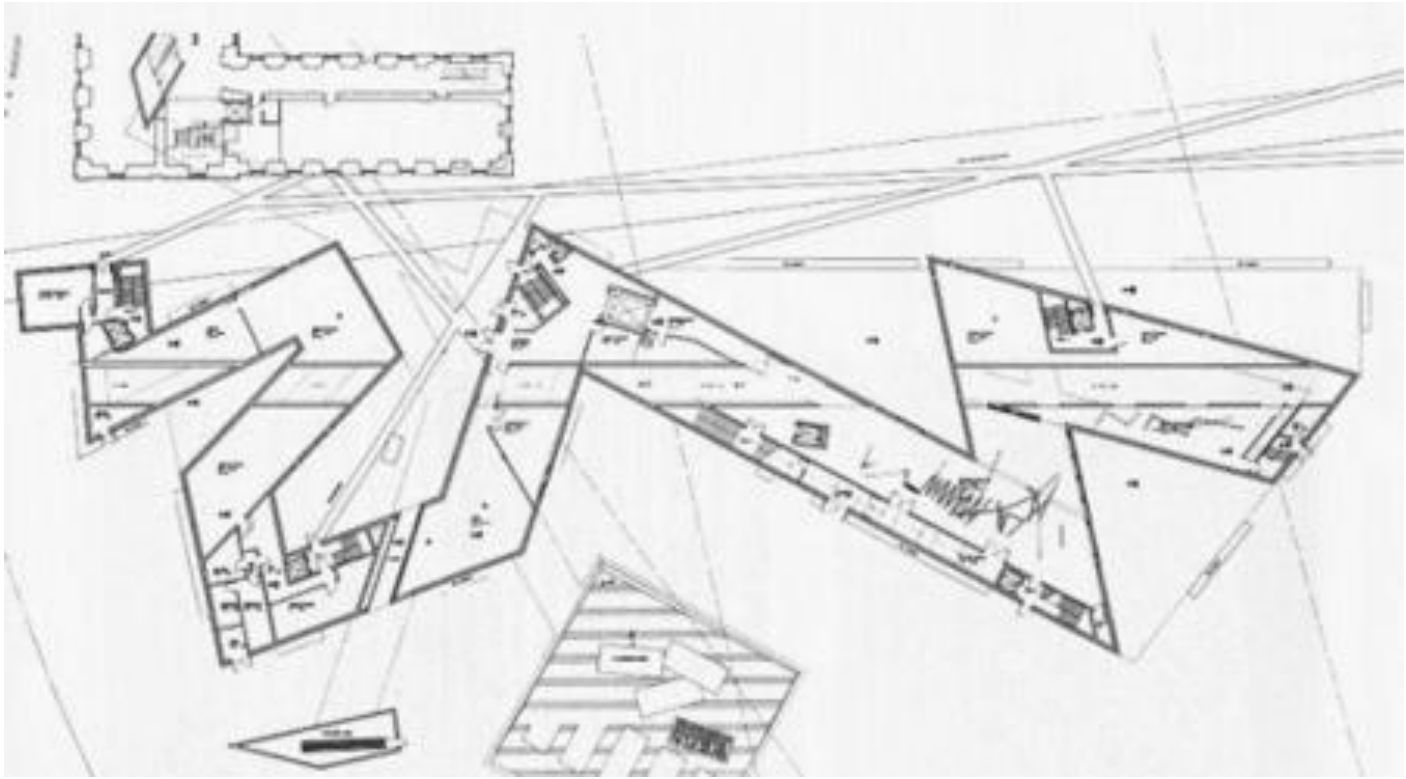
Jüdisches Museum Berlin

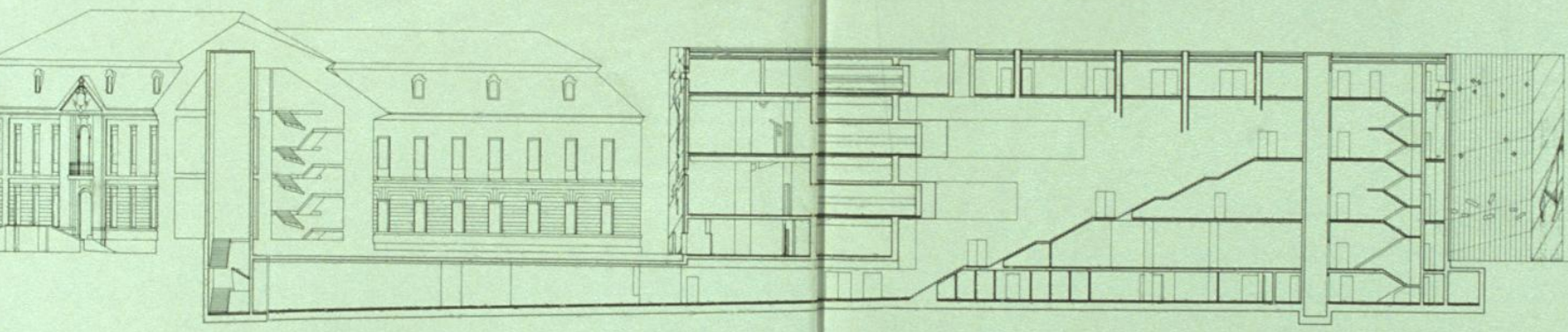












Handwritten architectural notes or a signature in the bottom right corner, consisting of several illegible characters.

heresienstadt Lodz

MANCHESTER SAO PAULO ANKARA ZÜRICH

KAPSTADT









VIDEO STOCKHOLM



BUEENOS











city

aid

DE HAARLEM - 1664

PARIS - MONTEVIDEO - 1664

FRANCESCO DESSA - 1664

La